

SWIR ILLUMINATOR [PHOSPHORUS M15M]

UK MADE



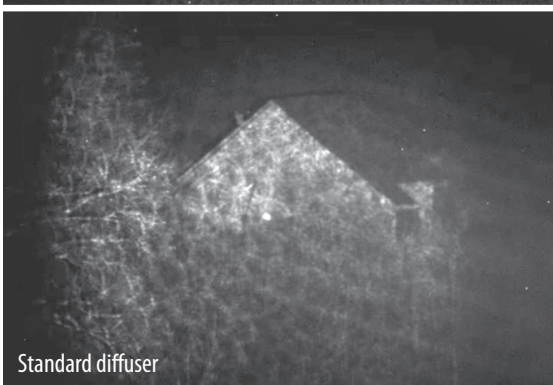
IDENTIFICATION DATA

| | |
|------------------|------------|
| Type | PHOSPHORUS |
| Reference number | M15M |
| NSN | N/A |

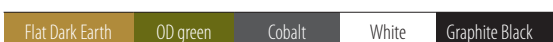
DESCRIPTION

The PHOSPHORUS M15M is a medium range covert laser illuminator working in SWIR band. It provides powerful and adjustable laser beam ideal for target illumination at distances up to 2 km. The PHOSPHORUS M15M features unique laser speckle reduction technology providing extremely uniform illumination pattern. The PHOSPHORUS M15M can be operated as handheld, weapon or tripod mounted device. It has multiple operation modes including remote control via RS232 interface and external power supply option.

Powerful beam with low NOHD of 3 m; Full remote control; Covert.



Custom colors available:



LASER SPECIFICATIONS

| | | |
|--------------------------|------|---------------------------------|
| Wavelength | nm | 1550 |
| Working modes | | Low - Medium - High - Pulse |
| Max. output power | W | 0,3 - 0,6 - 1,3 - 1,3 |
| Beam divergence (Narrow) | mrاد | 20 |
| Beam divergence (Wide) | mrاد | 60 |
| Pulse Mode | | 4 to 6 Hz, 40 - 60% duty factor |
| Working distance | km | Up to 2 km |

SAFETY SPECIFICATIONS

| | | |
|-----------------------------------|------------------|-------------------------|
| Laser safety class (at Max power) | | Class IV (ANSI CLASS 4) |
| NOHD (10s exposure) | m | 3 |
| NSHD (10s exposure) | m | 3 |
| Ocular MPE | W/m ² | 1000 |
| Skin MPE | W/m ² | 1000 |

POWER SUPPLY

| | | |
|-------------------|----------|--|
| Internal | AA batt. | 4 |
| External | VDC | 4,5-30 |
| Power consumption | W | <7 |
| Run time | | 1 h 40 min (high mode, with lithium batteries) |

ENVIRONMENTAL

| | | |
|-----------------------|--|----------------------|
| IP Rating | | Manufactured to IP67 |
| Operating temperature | | -32°C to +50°C |
| Storage temperature | | -40°C to +70°C |

DIMENSIONS, CONNECTORS, WEIGHT & MOUNTING

| | | |
|----------------------------|--|--|
| Length x Width x Height | | 260 x 55 x 65 mm |
| Mounting system | | Picatinny Rail (MIL-STD-1913), Standard 1/4-20 tripod thread |
| Weight (without batteries) | | 740 g |
| Connectors | | External power supply; RS232 serial interface; External fire switch (7 pin "Binder" 712/702 connector). |

FOR ENQUIRIES

Brolis Photonics Solutions Ltd. Phone +44 7548 880693
Willowbank Business Park, info@b-photonics.com
Larne, County Antrim, BT40 2SF www.b-photonics.com
Northern Ireland